

# SMETA<sup>®</sup> in numbers

SMETA the Sedex Members Ethical Trade Audit

SMETA 7.0  
available December 2019

## SMETA is...

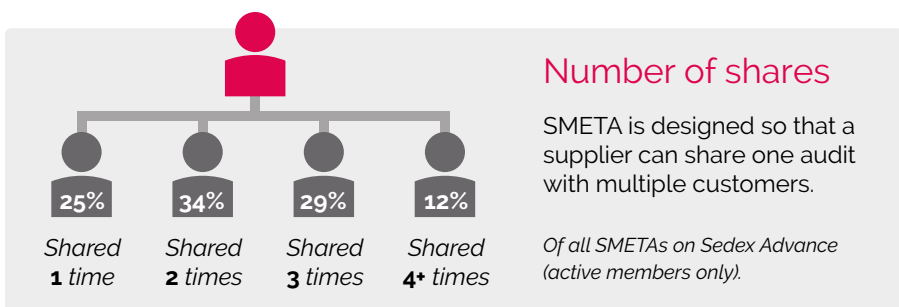
an audit format which is a compilation of good practice in ethical audit techniques **designed to help auditors conduct high quality audits that encompass all aspects of responsible business practice** created by the Sedex Stakeholder Forum (previously the Sedex Associate Auditor Group).



**SMETA is the world's most commonly used ethical audit format**

## What's new in SMETA 6.0?

- ✓ Introduces the United Nations Guiding Principles (UNGP) for Business and Human Rights and includes an investigation into how Universal Rights are protected within global supply chains;
- ✓ Aims to increase both transparency in recruitment practices and quality of reporting around the recruitment process;
- ✓ Designed to better tackle forced labour by highlighting the movement of workers across the globe;
- ✓ Includes new details on the UK Modern Day Slavery Act 2015;
- ✓ Improves the measurement of positive impacts at a site, using performance indicators such as worker turnover;
- ✓ Features an expanded business ethics module, to include financial requirements, and to allow auditors to raise non-compliances in this section;
- ✓ Has a refreshed and streamlined format, to reduce duplication.

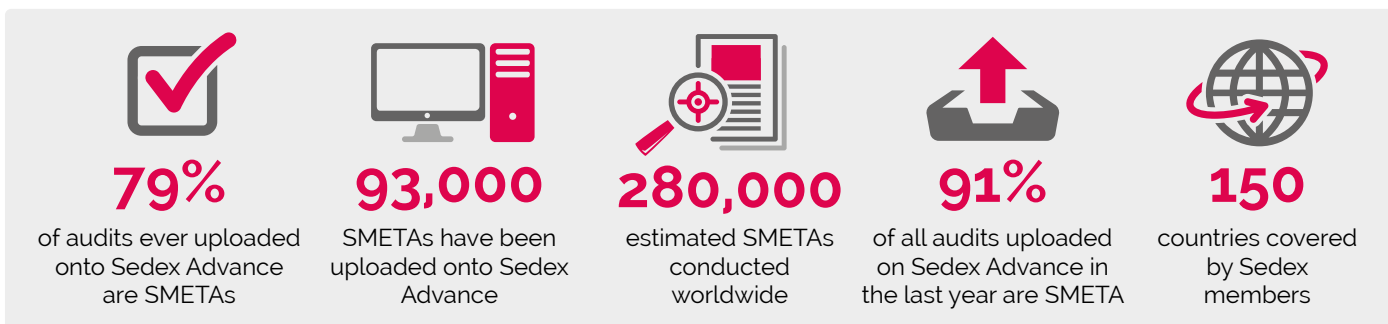


## The Sedex Stakeholder Forum (SSF)

Works to drive convergence in ethical trade/social auditing, based on and helping to shape best practice.

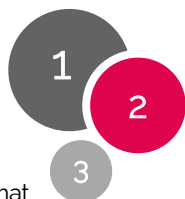
**Active in Europe, Latin America & China.**

SSF Groups include commercial auditing companies, NGOs and Sedex members.



## The 3 elements of SMETA

- A common corrective action plan format
- Best practice guidance on conducting ethical trade audits
- A common audit report format



## SMETA is publicly available in English

English/Mandarin and English/Spanish versions are also available to Sedex members.

## The 4 pillars of a SMETA



- Labour Standards
- Health & Safety
- Business Ethics
- The Environment

**Sedex**

Head Office: 5th Floor, 24 Southwark Bridge Road, London, SE1 9HF

+44 (0)20 7902 2320 | [helpdesk@sedexglobal.com](mailto:helpdesk@sedexglobal.com) | [www.sedexglobal.com](http://www.sedexglobal.com)

LONDON | SANTIAGO | SHANGHAI | SYDNEY | TOKYO